



**MARREN**  
ARCHITECTS

8 West West Street  
Baltimore, MD 21230  
office: 410.659.0578  
www.marrenarchitects.com

SEAL:

PROFESSIONAL CERTIFICATION:  
I certify that these documents were prepared or approved by me, and that I am a duly licensed architect under the laws of the State of Maryland, license number 13728, expiration date 12/31/21

**PARSONAGE APARTMENTS**  
502 CATHEDRAL ST.  
Baltimore, MD 21201

REVISIONS

NO.	DATE

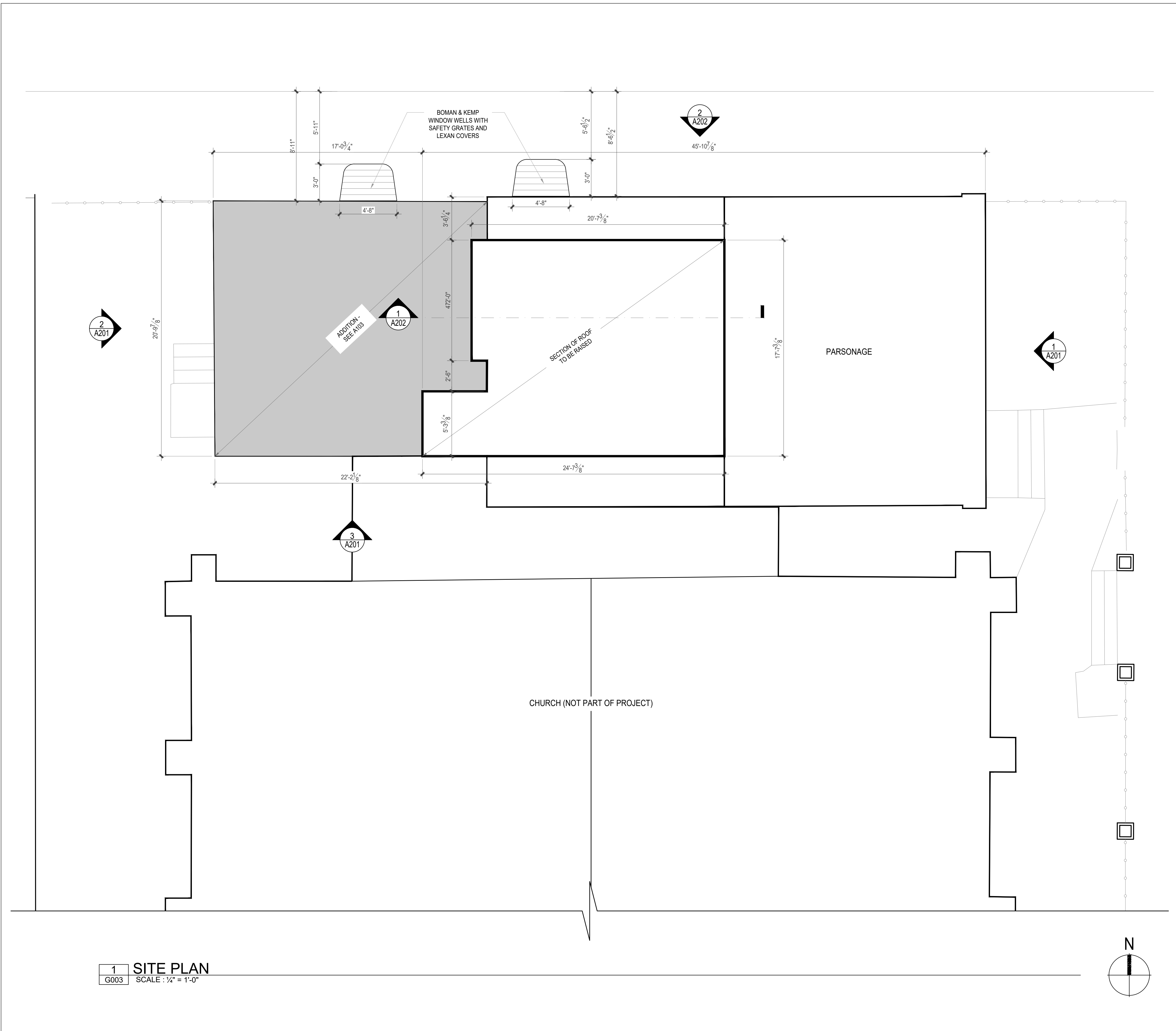
SHEET TITLE  
SITE PLAN

DATE: 03.18.2021

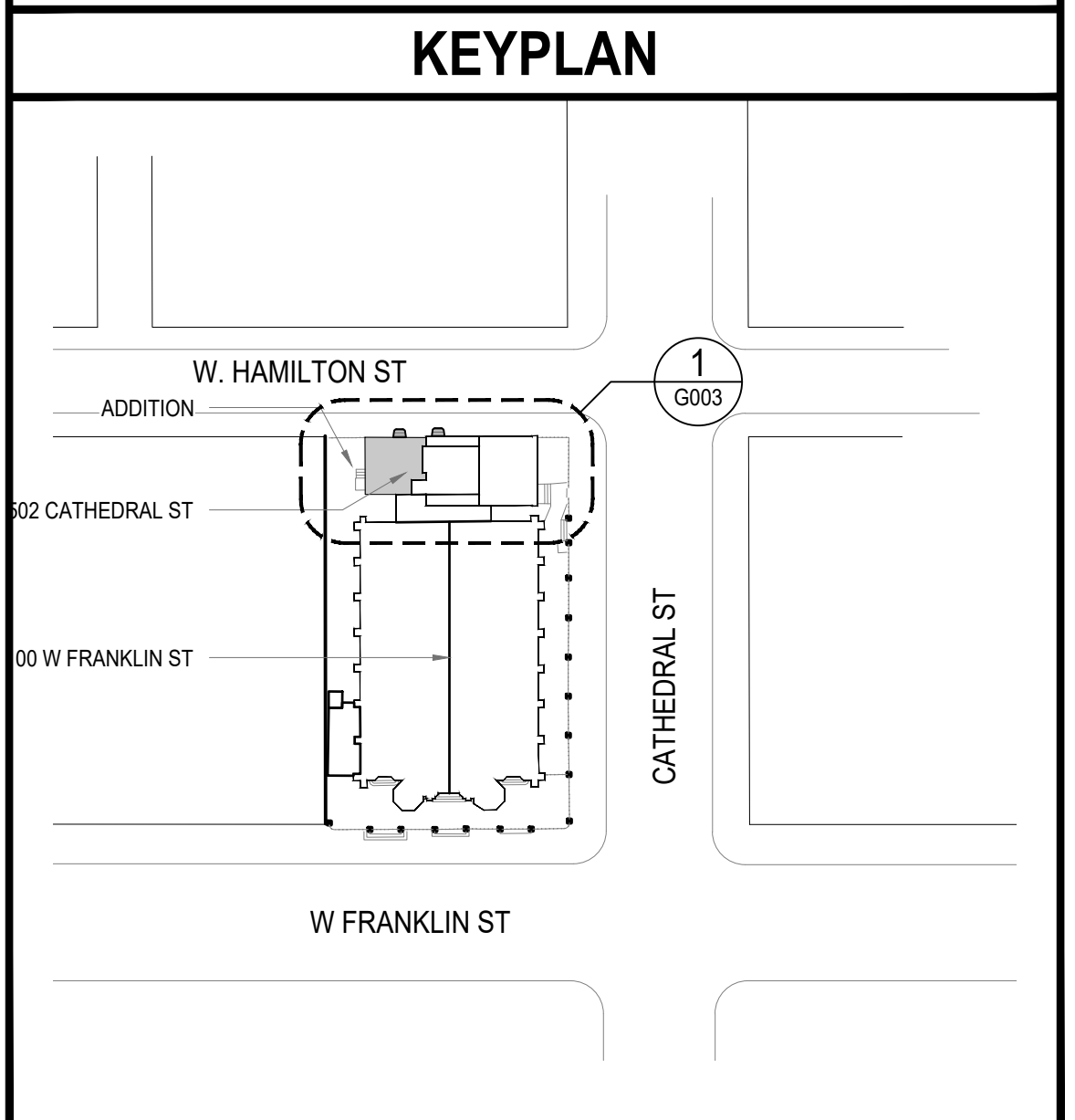
PHASE:  
CHAP ATP SUBMITTAL

SHEET NUMBER

**G003**



**1** **SITE PLAN**  
G003 SCALE: 1/4" = 1'-0"





MARREN ARCHITECTS

8 West West Street  
Baltimore, MD 21230  
office: 410.659.0578  
www.marrenarchitects.com

SEAL:

PROFESSIONAL CERTIFICATION:  
I certify that these documents were prepared or approved by me, and that I am a duly licensed architect under the laws of the State of Maryland, license number 13728, expiration date 12/31/21

PARSONAGE APARTMENTS  
502 CATHEDRAL ST.  
Baltimore, MD 21201

REVISIONS

NO.	DATE

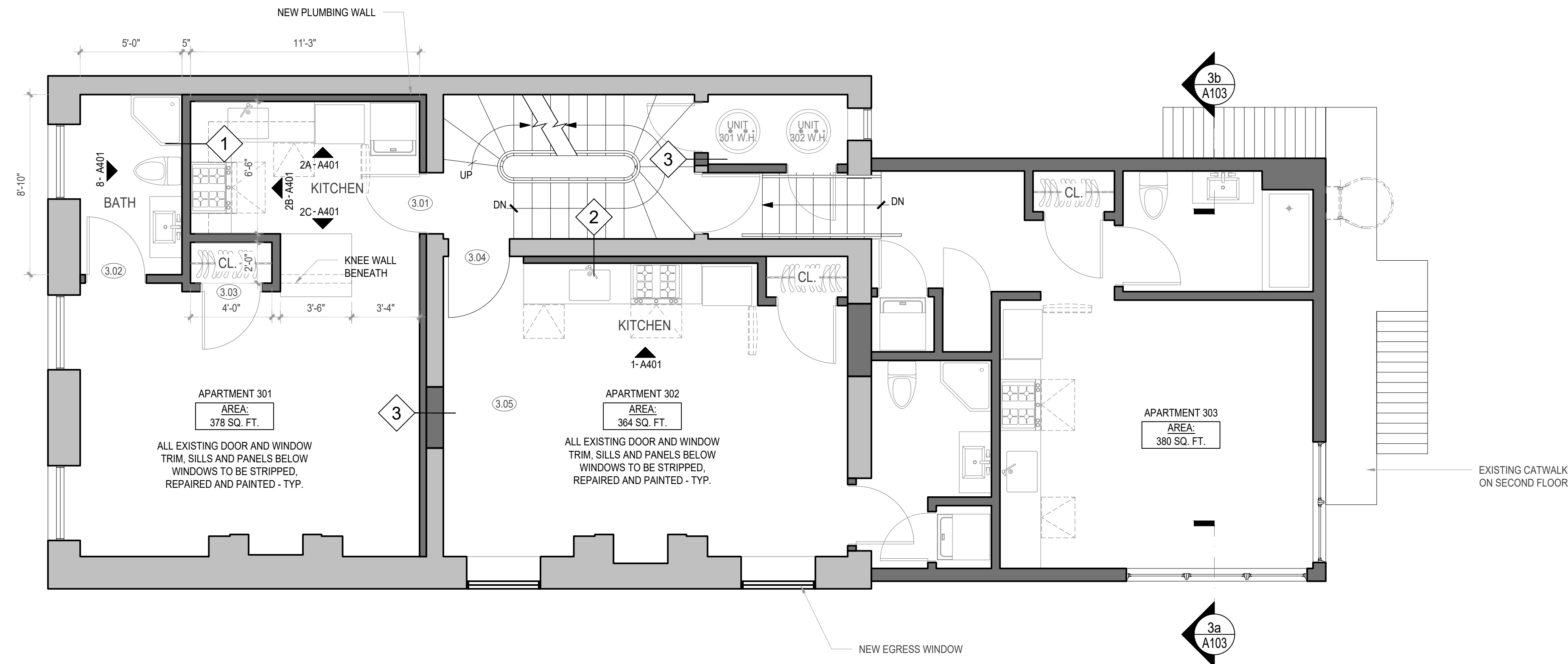
SHEET TITLE  
PROPOSED FLOOR PLANS

DATE: 03.18.2021

PHASE:  
CHAP ATP SUBMITTAL

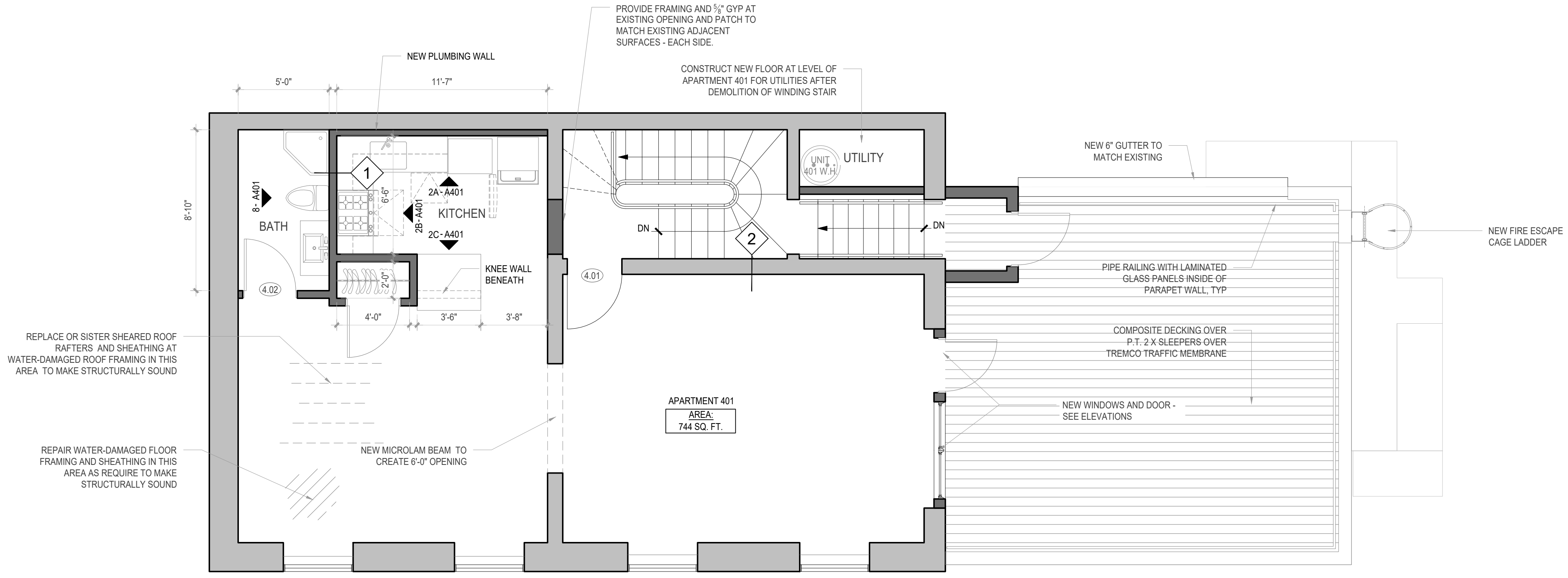
SHEET NUMBER

A103



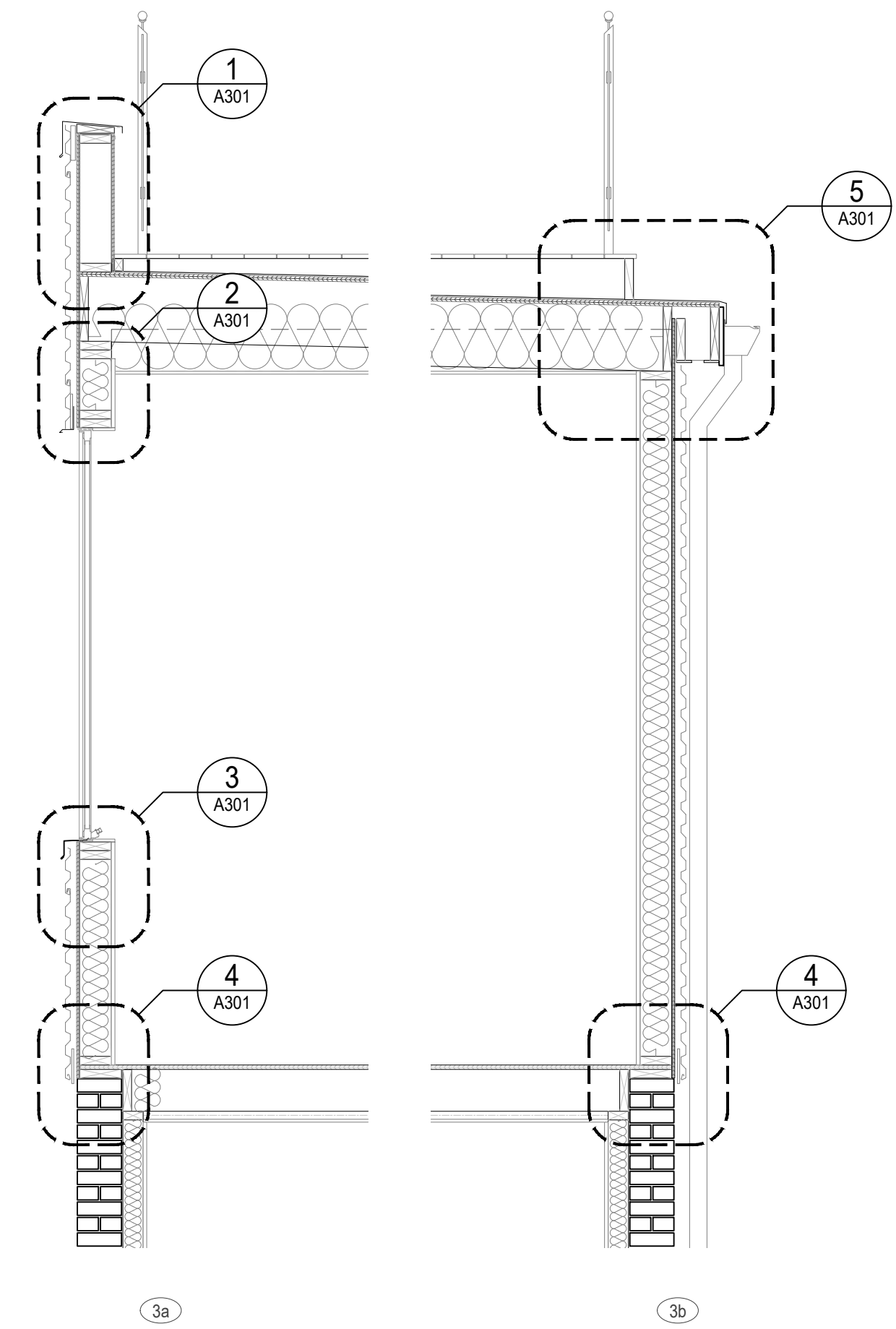
1 THIRD FLOOR PLAN  
SCALE: 1/4" = 1'-0"

EXISTING WALL NEW WALL



2 FOURTH FLOOR PLAN  
SCALE: 1/4" = 1'-0"

EXISTING WALL NEW WALL



3 WALL SECTIONS  
SCALE: 1/2" = 1'-0"



MARREN ARCHITECTS

8 West West Street  
Baltimore, MD 21230  
office: 410.659.0578  
www.marrenarchitects.com

SEAL:

PROFESSIONAL CERTIFICATION:  
I certify that these documents were prepared or approved by me, and that I am a duly licensed architect under the laws of the State of Maryland, license number 13728, expiration date 12/31/21

PARSONAGE APARTMENTS  
502 CATHEDRAL ST.  
Baltimore, MD 21201

REVISIONS

NO.	DATE

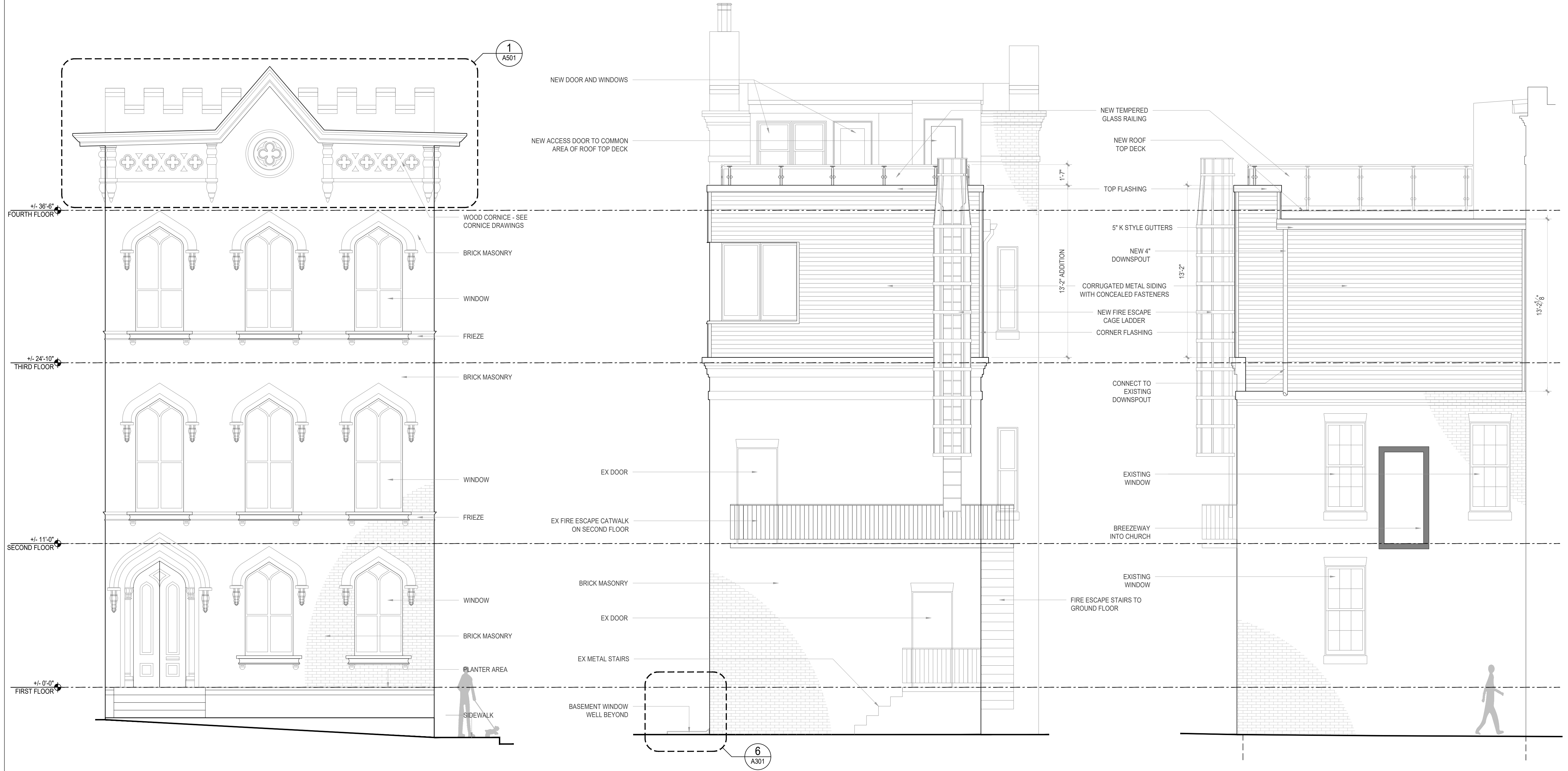
SHEET TITLE  
EXTERIOR ELEVATIONS

DATE: 03.18.2021

PHASE:  
CHAP ATP SUBMITTAL

SHEET NUMBER

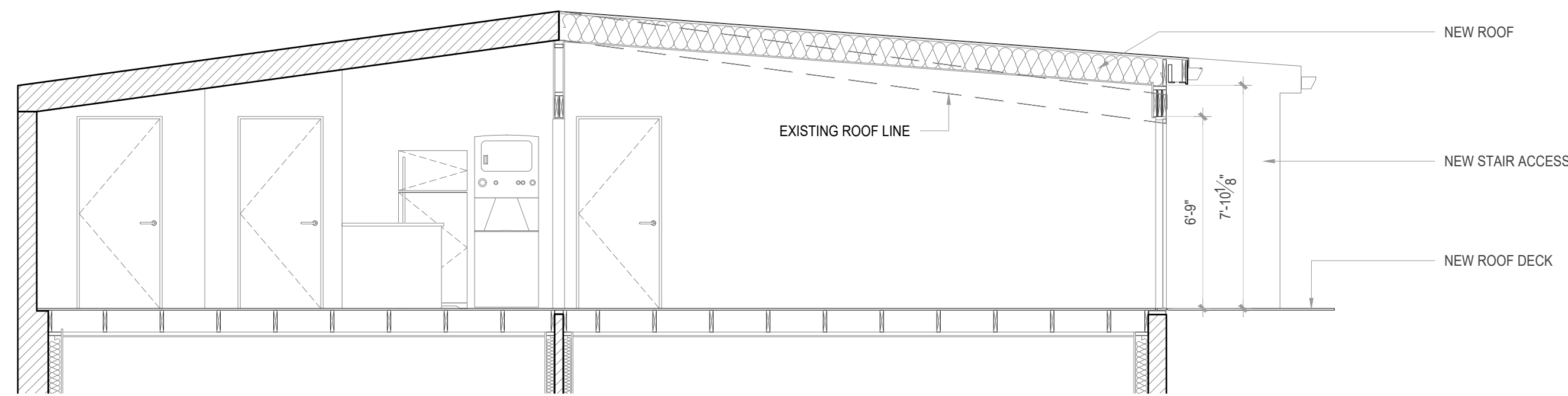
A201



1 SOUTH ELEVATION (FACING CATHEDRAL ST)  
A201 SCALE: 1/4" = 1'-0"

2 NORTH ELEVATION (FACING ALLEY)  
A201 SCALE: 1/4" = 1'-0"

3 PARTIAL SOUTH ELEVATION  
A201 SCALE: 1/4" = 1'-0"



**1 SECTION SHOWING EXTENT OF ROOF ALTERATION ON 4TH FLOOR**  
 A202 SCALE: 1/4" = 1'-0"



**2 SIDE ELEVATION (FACING HAMILTON ST)**  
 A202 SCALE: 1/4" = 1'-0"



**MARREN**  
ARCHITECTS

8 West West Street  
 Baltimore, MD 21230  
 office: 410.659.0578  
 www.marrenarchitects.com

SEAL:

**PROFESSIONAL CERTIFICATION:**  
 I certify that these documents were prepared or approved by me, and that I am a duly licensed architect under the laws of the State of Maryland, license number 13728, expiration date 12/31/21

**PARSONAGE APARTMENTS**  
 502 CATHEDRAL ST.  
 Baltimore, MD 21201

REVISIONS	
NO.	DATE

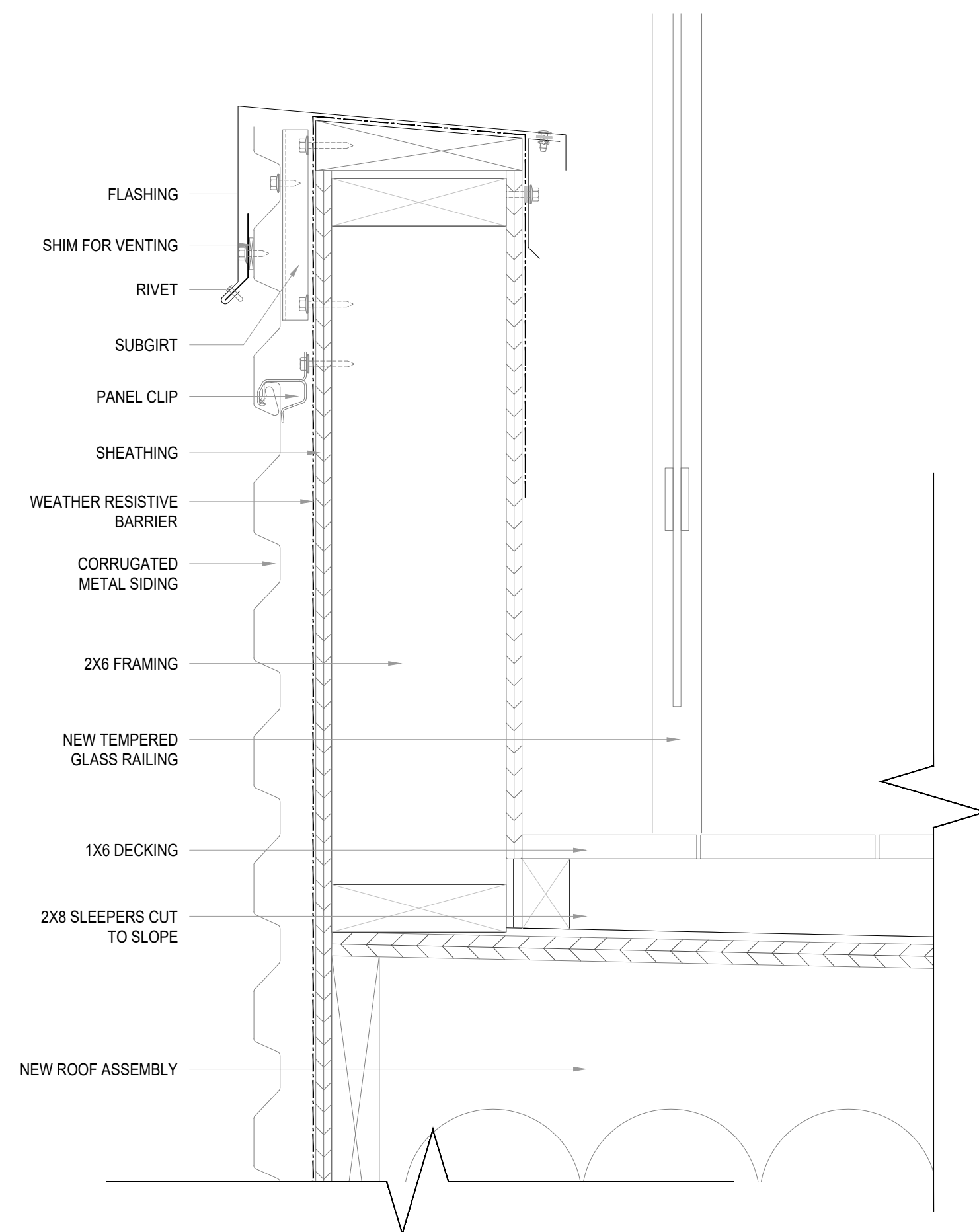
SHEET TITLE  
**EXTERIOR ELEVATIONS**

DATE: 03.18.2021

PHASE:  
 CHAP ATP SUBMITTAL

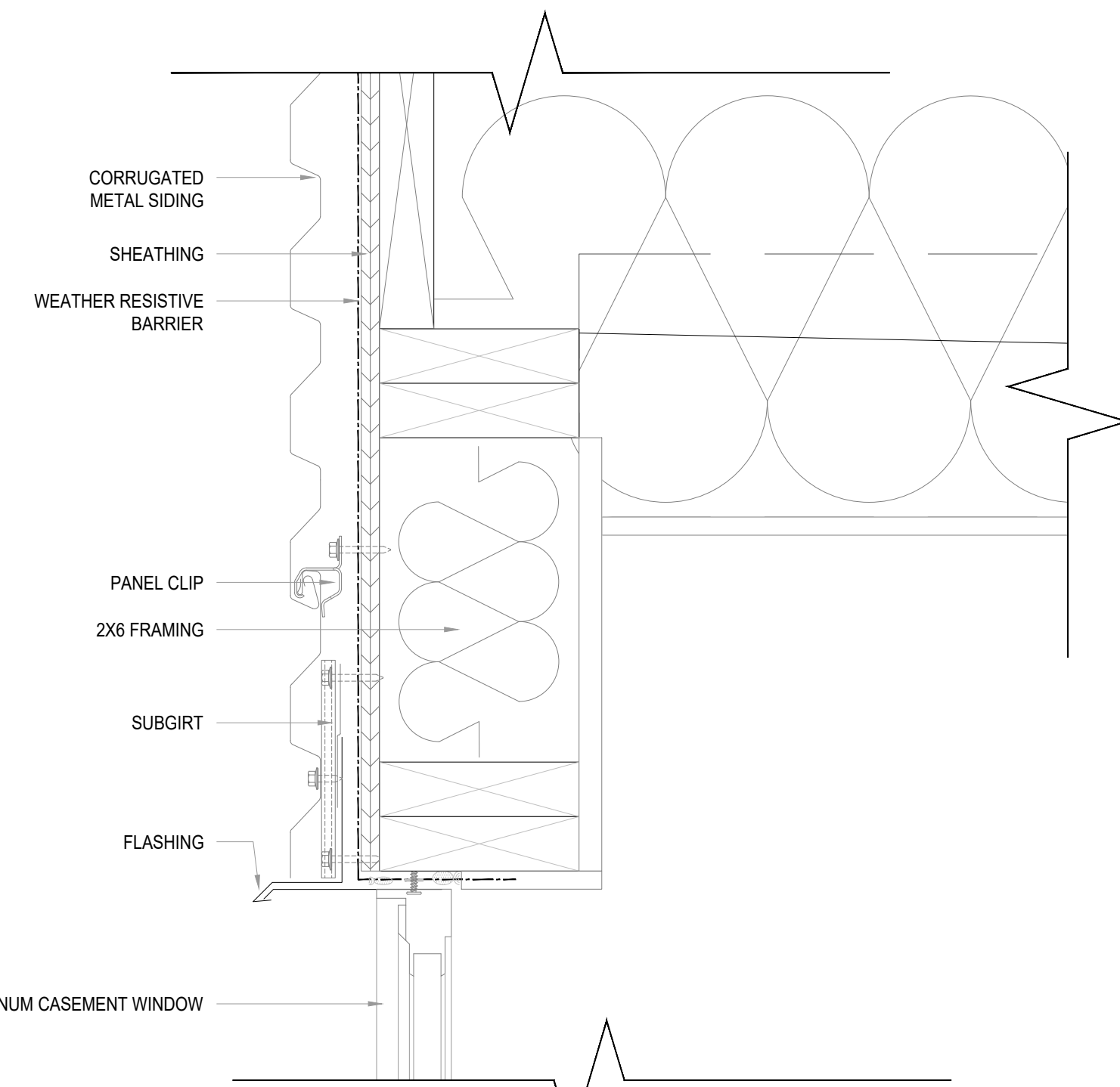
SHEET NUMBER

**A202**



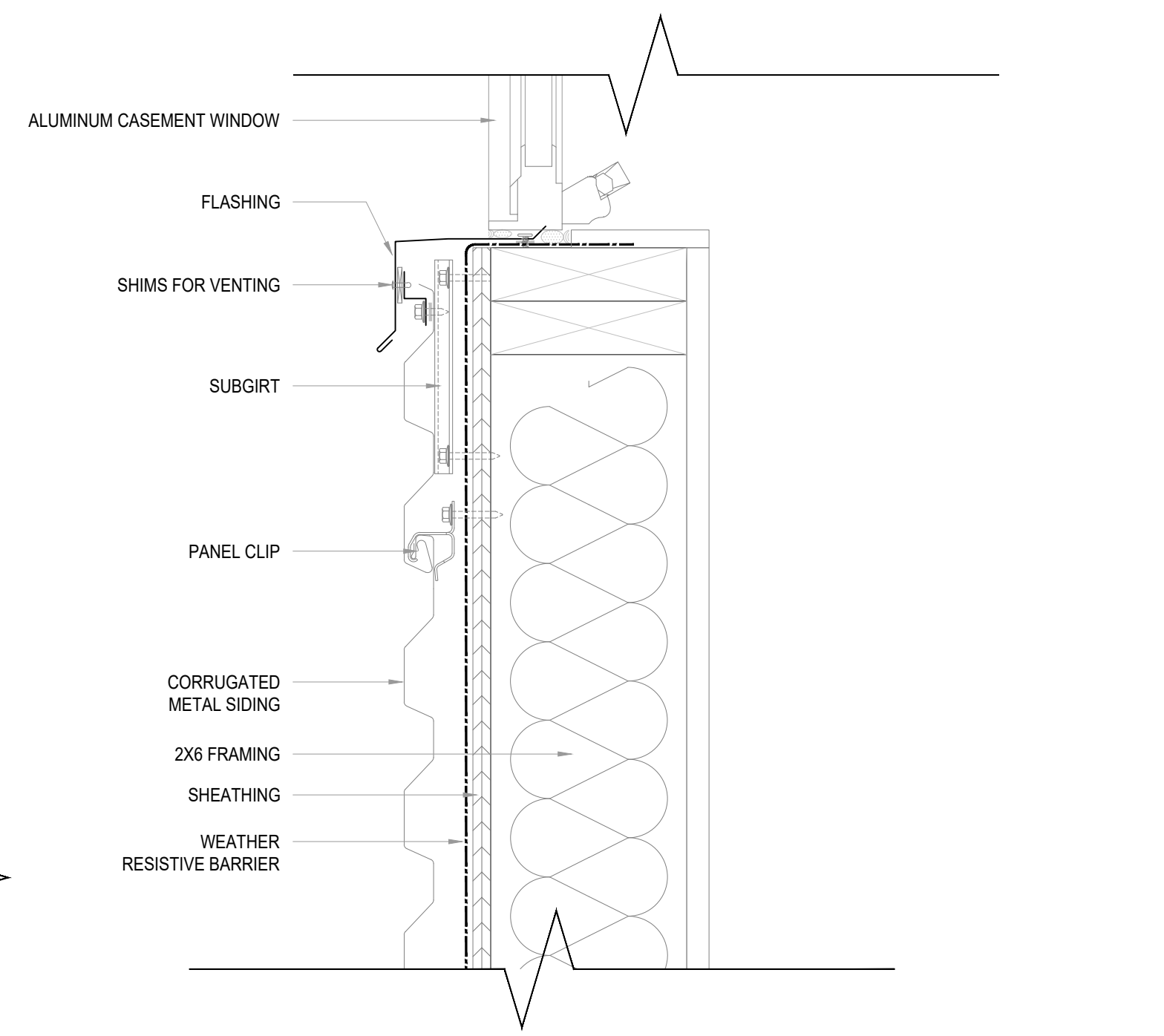
**CORRUGATED METAL CLADDING  
DETAIL AT PARAPET**

1  
A301 SCALE: 3/4" = 1'-0"



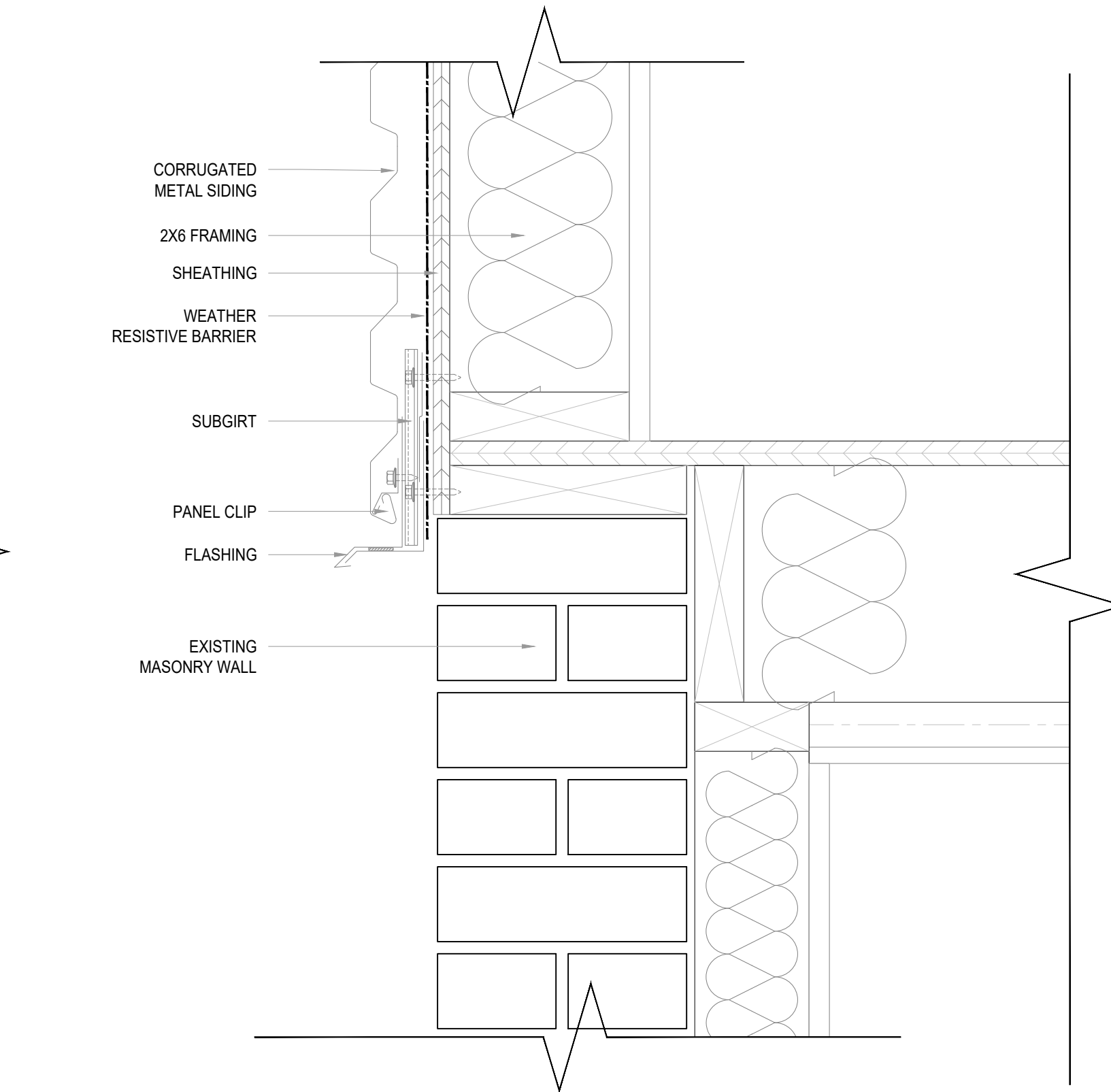
**CORRUGATED METAL CLADDING  
DETAIL AT WINDOW HEAD**

2  
A301 SCALE: 3/4" = 1'-0"



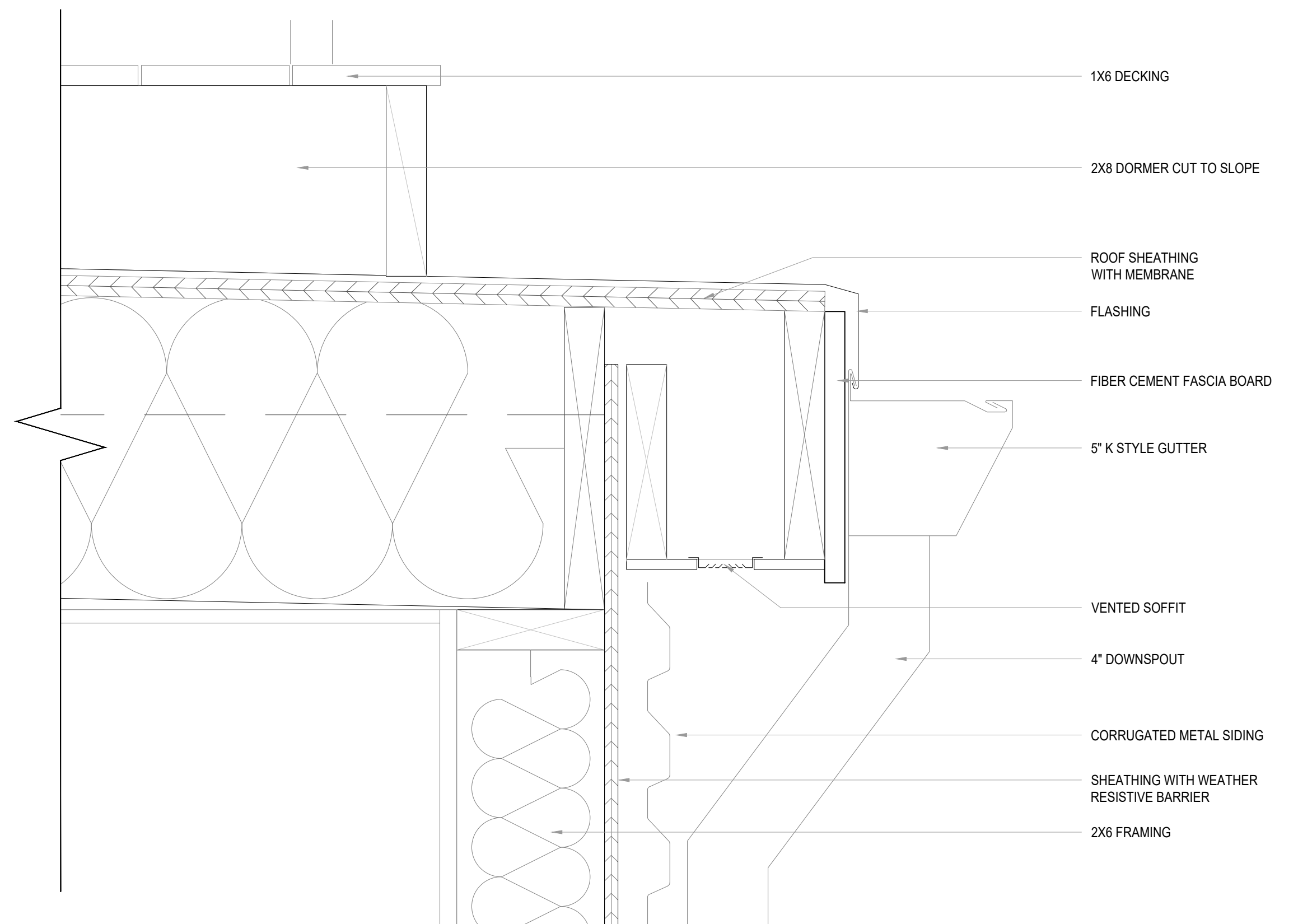
**CORRUGATED METAL CLADDING  
DETAIL AT WINDOW SILL**

3  
A301 SCALE: 3/4" = 1'-0"



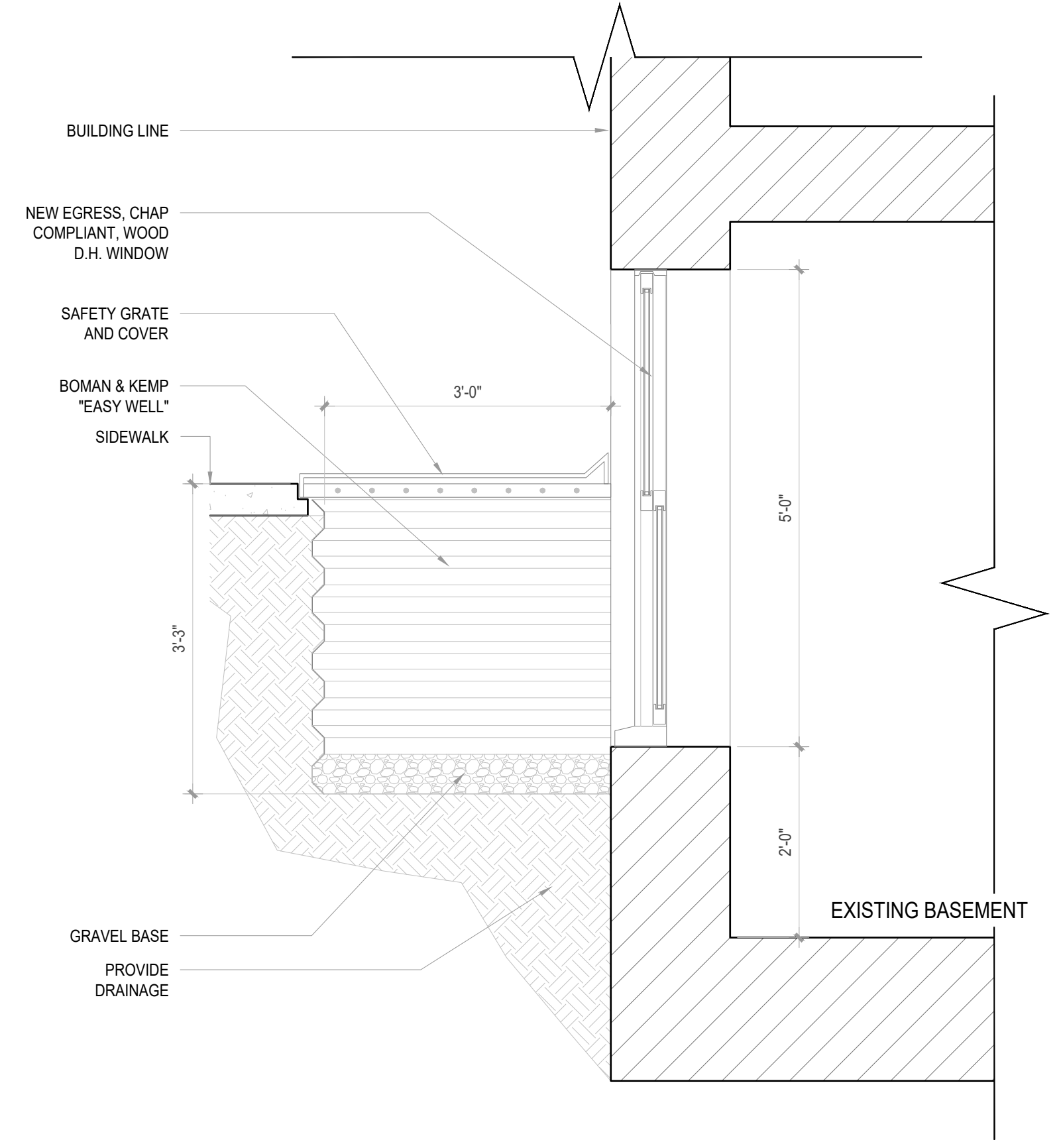
**CORRUGATED METAL CLADDING  
DETAIL AT BASE FLASHING**

4  
A301 SCALE: 3/4" = 1'-0"



**DETAIL AT NEW ROOF EAVE**

5  
A301 SCALE: 3/4" = 1'-0"



**WINDOW WELL SECTION**

6  
A301 SCALE: 3/4" = 1'-0"



**MARREN**  
ARCHITECTS  
8 West West Street  
Baltimore, MD 21230  
office: 410.659.0578  
www.marrenarchitects.com

SEAL:

**PROFESSIONAL CERTIFICATION:**  
I certify that these documents were prepared or approved by me, and that I am a duly licensed architect under the laws of the State of Maryland, license number 13728, expiration date 12/31/21

**PARSONAGE APARTMENTS**  
502 CATHEDRAL ST.  
Baltimore, MD 21201

REVISIONS	
NO.	DATE

SHEET TITLE

SECTIONS

DATE: 03.18.2021

PHASE: CHAP ATP SUBMITTAL

SHEET NUMBER

**A301**